



The story of Gloversville is deeply ingrained in the city's history as an industrial town. It grew from a tiny frontier village, formerly known as Kingsborough (now the Kingsboro Historic District) in the 1810s to a booming industrial city of 30,000 people in the early 20th century. Until the early 1960s, it produced up to 90% of the leather dress gloves in North America, with over 13,000 people employed in the leather and glove industries and related enterprises. Gloversville acknowledges its impressive past while enacting positive change through the \$10 Million Downtown Revitalization Initiative (DRI) and is paving the way for the next age of prosperity.

### City of Gloversville

3 Frontage Road

Gloversville, New York 12078

Phone: (518) 775-4500

Web: [www.cityofgloversville.com](http://www.cityofgloversville.com)



Collaborated in partnership with

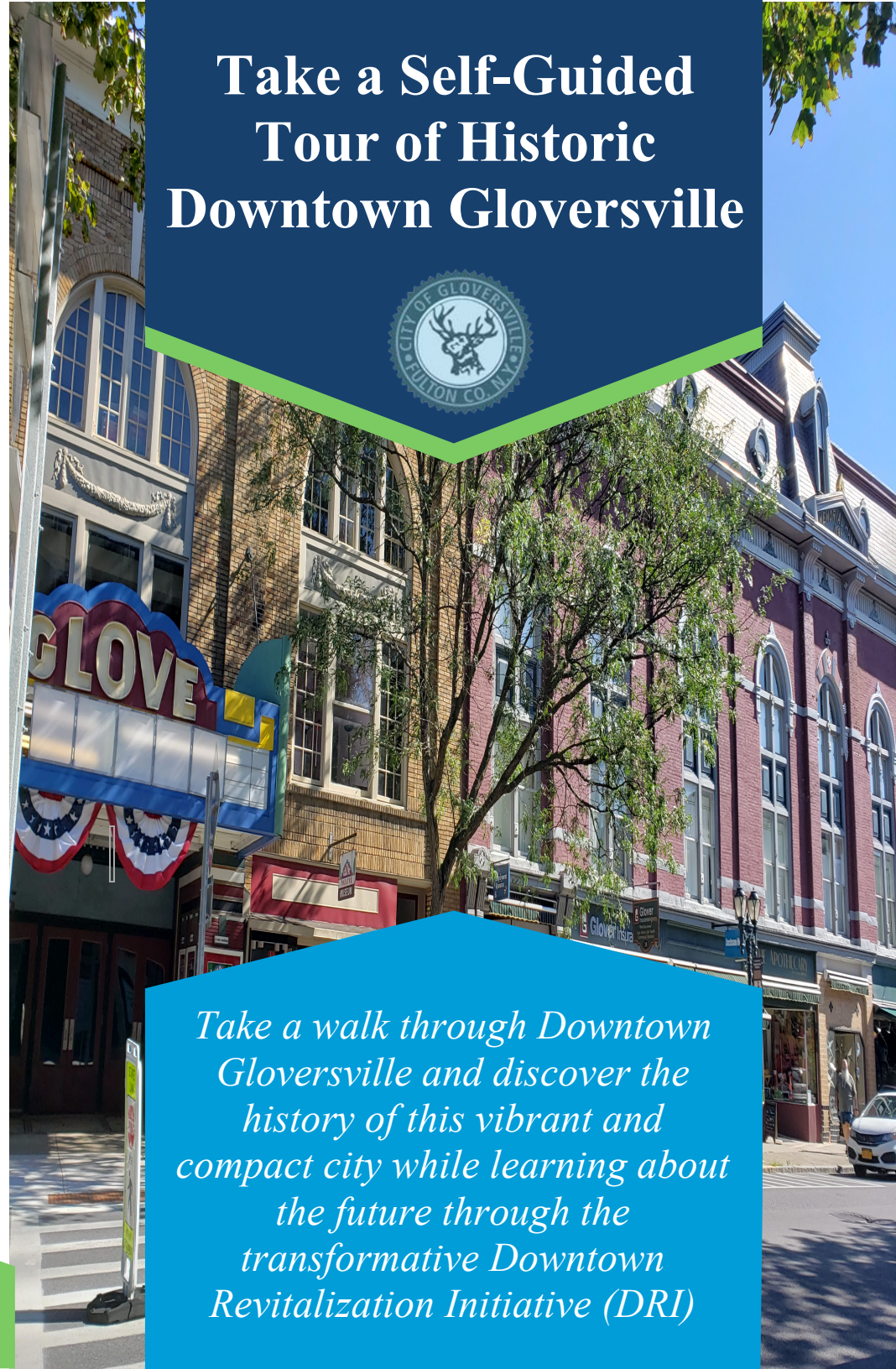


FULTON COUNTY CENTER FOR REGIONAL GROWTH

# Take a Self-Guided Tour of Historic Downtown Gloversville



*Take a walk through Downtown Gloversville and discover the history of this vibrant and compact city while learning about the future through the transformative Downtown Revitalization Initiative (DRI)*





## Other Points of Interest

Please make time to visit these sites in Gloversville:

\* Gloversville Public Library, 58 E. Fulton St., is a historic library that was constructed in 1904 and is one of 1,600 that Andrew Carnegie funded in America alone. The building is designed in the Beaux Arts style by Albert Randolph Ross. The facade, made with limestone and tan brick, gleamed when the building was new. In 2005, a Capital Campaign renovated the building and highlighted the Carnegie building's historic features.

\* Kingsboro Historic District, 256 Kingsboro Ave., is home to one of the earliest settlements in Fulton County. Originally part of Sir William Johnson's expansive land holdings, after the Revolutionary War, it was settled by families from New England. Rev. Elisha Yale's informal 1803 census states: "Kingsborough is a pleasant society, five by seven miles in extent, about 50 miles from Albany, nine north miles in extent, about 50 miles from Albany, nine north of the Mohawk, containing 233 families and about 1,400 souls. Of the families, 191 are of English descent, 23 Scotch, 14 Dutch, and 5 Irish."

\* Daniel Hayes Mill, 177 W. Fulton St., is a DRI project. The four-story historic wood-framed brick structure and multiple single-story masonry buildings were part of a former tannery property. It's still structurally sound and the DRI funding will help redevelop the property for multi-family residential use that will bring new residents downtown.







## Welcome to Gloversville!

Learn about Gloversville's history and discover the vision for the near future that is made possible by the \$10 Million Downtown Revitalization Initiative Grant (DRI).

This one-mile tour contains thirteen stops that showcases the city that was not only home to the industry that once gloved the nation, but also to the Kingsborough Hotel that gave lodging to men who would go on to be president.

Walk the same streets that Teddy Roosevelt and Franklin Delano Roosevelt once walked and view the same buildings and architecture that inspired a young MGM studio head named Samuel (Goldfish) Goldwyn as he worked in the Downtown Gloversville area. Along the way, learn about the vision that will revitalize historic buildings and landscapes while ushering in a new era for Gloversville.

Not only will these projects attract jobs, businesses, and residents, they will also make this vibrant city a destination place with new restaurants, an active historic theater, and beautiful greenspaces.



**Stop 14. 39 North Main Street** is the location of the historic Carriage House that operated as a multi-level retail store. It has been vacant for nearly two decades. The \$1.3 million in DRI funding will be used to rehabilitate the building as it will provide a microbrewery, sports bar, and restaurant, as well as several units of housing on the upper floors.

In addition to residential space, a portion of the upper area will be utilized to function as a banquet hall as needed.



**Stop 1. 64 South Main Street** is the location of incoming Glove City Brewing thanks to DRI funding. This vacant former detailing garage would be re-purposed into an independently owned startup and microbrewery. Existing garage stalls will be transformed along with the rest of the facility to accommodate a small kitchen and restrooms. The lot will be resurfaced and replaced by an outdoor biergarten with seating and lighting fixtures. This will beautify and activate the southern gateway of downtown.



**Stop 12 & 13. 40 & 42 North Main Street** are two historical building neighbors that will both be receiving DRI funding. At the Schine Memorial Hall, constructed in 1881, the opera house on the second floor brought a variety of celebrities to Gloversville, including John Phillip Sousa. It hosted political events and dignitaries, including future president Theodore Roosevelt. When the Schines purchased the Glove Theatre, they obtained Memorial Hall and converted the opera house to offices and a private screening room. The Glove Theatre, built in 1914, started as a live performance venue for vaudeville. DRI funding will be used at the Schine for a glove museum and co-working space for artists. At the theater, funding will be used for rigging and lighting systems, restoring the balcony and improving acoustics.





**Stop 11. 44 North Main Street** was home to the former municipal building that was City Hall and it included a jail where Harpo Marx once stayed the night. It is now a mixed-use facility with the upper floors converted to apartments. The \$250,000 in DRI funding will be used for renovations to provide an improved and spacious restaurant. Sidewalk dining and a bakery in the rear are also planned.



**PULLED BY A BULLDOG MACK TRUCK**, the Palace Diner comes into Gloversville from Bayonne, N.J., in 1923. It is shown on South Main Street, near Washington Street; not far from its present location next to the Knox Building. Owners and operators of this new diner were Carlton Clute Sr., and Al Main. Note the three police officers, one on a motorcycle, who cleared traffic for this "new beanyery." (Photo courtesy of Tony Sena, Gloversville)

**Stop 2. 62 South Main Street** is home to the historic Palace Diner, established in Gloversville for 100 years this coming August. Albert Main opened the Palace Diner in 1923. The lunch cart was built by the Jerry O'Mahony Dining Car Company of Bayonne, New Jersey, and then was shipped by railroad to Fonda. It was later transported to its current location by truck. The original diner was a railroad car and as a 24-hour eatery, it served thousands of employees in the leather and glove industries.





**Stop 3. 34 South Main Street** is the historic Kingsborough Hotel building that opened in 1903 and boasted of elaborate guest rooms, a banquet hall, ballroom, and basement tavern. Notable guests included Theodore Roosevelt, Franklin D. Roosevelt, and Samuel Goldwyn. Goldwyn, a Hollywood producer, began his life in Gloversville as Samuel Goldfish. He swept floors in a glove factory and worked his way up to a successful sales position before getting into the movie business.

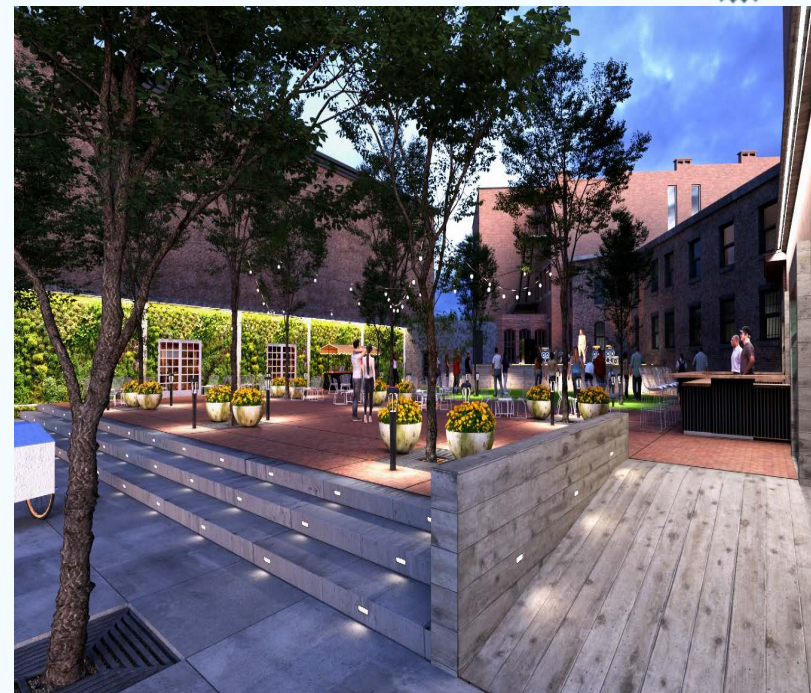


**Stop 10. 90 North Main Street** is currently home to Estee Park and behind it is Estee Senior Apartments, modeled to look like Gloversville High School, that was previously located here. The historic spot was once known as the former Gloversville Union Seminary, and in 1868 District No. 16 purchased the building and started in Gloversville Union School. As the school grew, the original was replaced by a three-story brick building in 1875 and another was constructed just north of the building in 1883. The south building was razed to make room for a new high school in 1908.



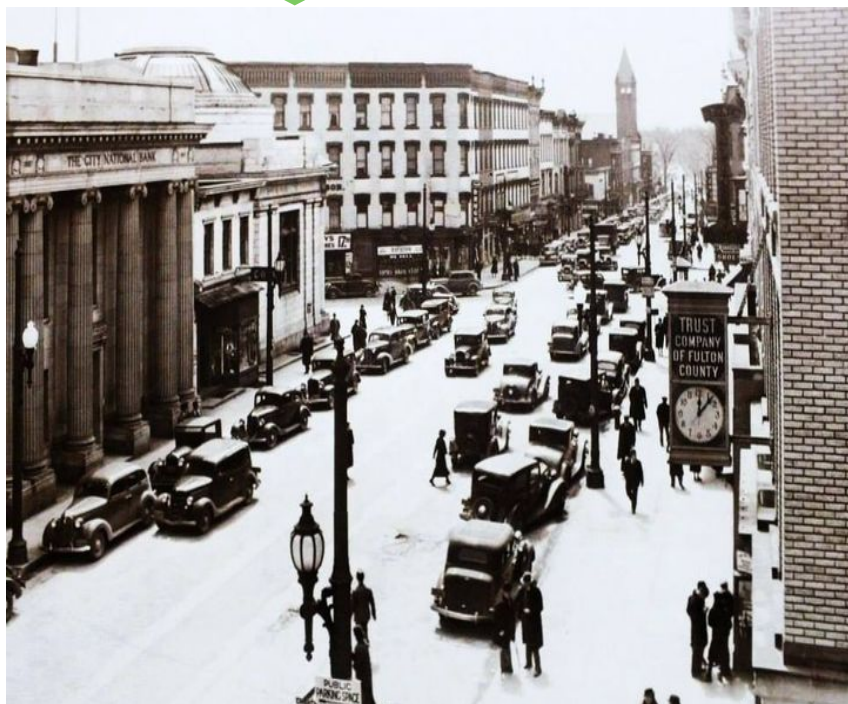


**Stop 9. 2 - 8 Elm Street** is known in the DRI as St. Thomas Square, and is currently home to the Gloversville Farmers Market. Through the DRI, space will be home to a year-round park with the creation of a new pedestrian and memorial area around the Farmers Market Pavilion. An ice-skating area with associated amenities will also be developed.

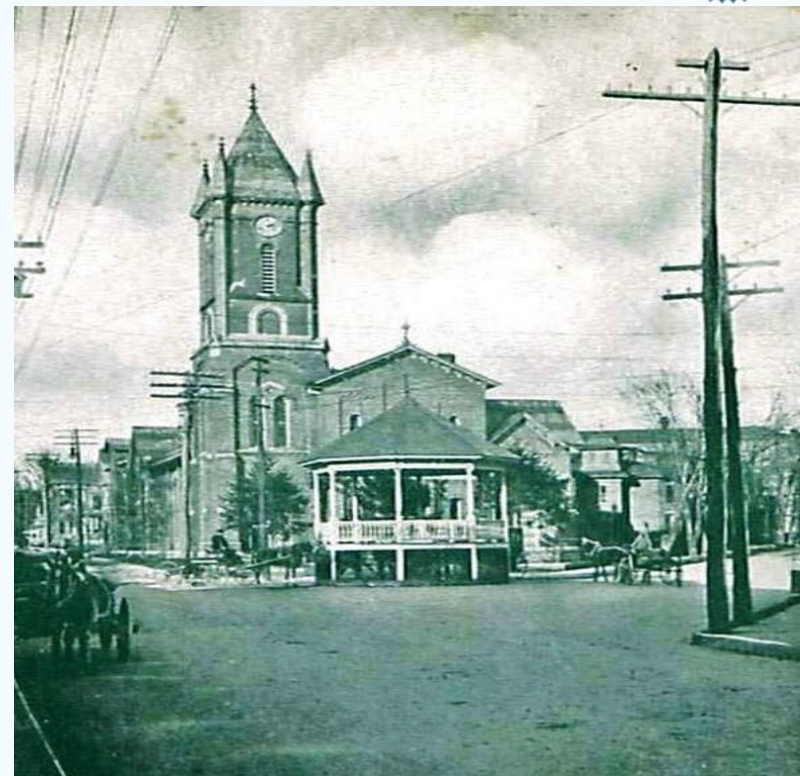


**Stop 4. 12 - 18 South Main Street** is known as the future home of the Littauer Piazza, a DRI project aimed at bringing a new greenspace to South Main Street. Currently a vacant parcel, it was once home to the Littauer Building, the city's first public library. It had been decades since the building was occupied. Thanks to the DRI funding, it will be transformed into an urban plaza gathering place for public concerts and performances, weekly outdoor movie nights, and an urban park atmosphere.





**Stop 5.** Located near 2 South Main Street is the historic "Four Corners of Gloversville." The City of Gloversville was created by the convergence of three separate entities: the Settlement on the Hill, Mill Settlement, and Kingsborough Settlement. These three communities met in what is today's Four Corners, the center of the Downtown Gloversville Historic District. The Four Corners was a hub of activity with carriages, buses, and electric trolleys having stops at the corners over the years.



**Stop 8.** Bleecker Street Square, near 33 Bleecker Street, is a historic site to the city as the land was dominated by the large home of Capt. David Spaulding, an extensive manufacturer in Fulton County and later a Civil War veteran. Capt. Spaulding often held drills for the local soldiers on his large front lawn. Bleecker Street Square later became a bustling center with restaurants, stores, hotels and jewelers.





**Stop 7. 52 Church Street** is the location for the DRI project called Glove City Lofts. Artist housing will be constructed on an existing vacant lot near City Hall in the heart of downtown. It will offer 75 loft-styled affordable housing units for mixed-income tenants, complete with greenspace and an art gallery managed by the Glove City Arts Alliance. The surrounding streets are a part of another DRI project that would improve the connectivity and create a welcoming environment by upgrading sidewalks, provide street trees for shade and pedestrian lighting at key locations.



**Stop 6. Trail Station Park**, West Fulton Street, is not only historic to Gloversville, it is also the home to a DRI project that would expand the park to create more space for children's activities and a new greenspace. It will also help to connect the FJ&G Rail Trail closer to downtown. Asphalt is being replaced with a splash pad and restrooms. The Fonda, Johnstown, and Gloversville (FJ&G) Railroad was incorporated in 1867 and this spot was its headquarters. The FJ&G constructed a new passenger depot and office in Gloversville in 1888 at the cost of \$25,000.





## *The Golden Rule*

### *of Party Line Telephone Service*

It's a simple rule and reads as follows:

Regard the feelings and time of your fellow subscribers on a party-line telephone as you would have him regard yours.

The observance of this good rule is a sure producer of friendliness and good neighborly feeling among party-line subscribers.

*Glen Telephone Company*



MONDAY  
6-9 P.M.  
SPECIAL

## ASSORTED PLASTICS

- LAUNDRY BASKET
- 10 QT. PAIL
- WASTE BASKET
- VEG. BINS
- HANDI-TRAYS

2 FOR \$1.00

USE OUR  
CREDIT  
COUPONS

J. J. Newberry Co.  
DOWNTOWN  
GLOVERSVILLE



## HOTEL KINGSBOROUGH

Operated by Gloversville Realty Co. Inc.

M. W. HENDERSON, President

Phone 4580

34 SOUTH MAIN STREET GLOVERSVILLE, N. Y.



*The Leading Hotel in a  
Progressive City at the  
Foothills of the Adirondack Mts.*

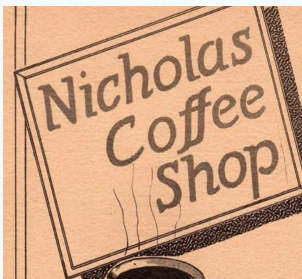
125 Rooms—60 Baths

Modern—Fireproof

European Plan

Famous for Good Food

VISIT OUR NEW COCKTAIL LOUNGE



SODA FOUNTAIN  
and RESTAURANT

1 SOUTH MAIN STREET  
Gloversville, N. Y.

